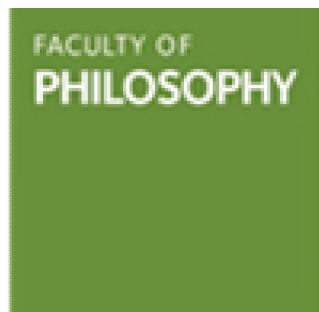


Mind, Value and Mental Health:
Philosophy and Psychiatry Summer School



14-15 July 2022, St Hilda's College, University of Oxford



Confirmed speakers and topics at the 2022 Summer School:

KEYNOTE SPEAKER: Essi Viding
**(Division of Psychology and Language Sciences,
University College London)**

*'Children and young people's mental health: Making the case for the study of
the 'embedded brain' '*



Essi Viding is Professor of Developmental Psychopathology, Co-Director of the Developmental Risk and Resilience Unit, and the Chair of Children and Young People's Mental Health Research Strategy at UCL. Her research utilises multiple methodologies to investigate different developmental pathways to disruptive behaviour disorders and poor mental health. She has received several prizes for her work, including the Royal Society Rosalind Franklin Award and the British Academy Wiley Prize for Psychology. She is a fellow of the British Academy and the Academy of Medical Sciences.

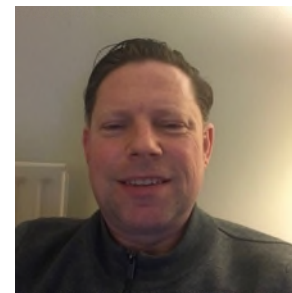
Khaldoon Ahmed
(East London NHS Foundation Trust)
with
Laurie Dahl
(South West London St George's NHS Trust)
and
Susan Young
(Royal College of Art)

'Why isn't psychiatry more rewarding for psychiatrists?'

Dr Khaldoon Ahmed is a general adult consultant psychiatrist working for the NHS in East London. He is formerly a trustee of the Mental Fight Club, and was one of the founders of the 'ReCreate Psychiatry' project that created a platform for dialogue and learning between psychiatrists and service users. He is a filmmaker, and holds a masters degree in Medical Anthropology from UCL. His most recent film 'John Meyer Ward' is about a former Victorian asylum building that was used as a psychiatric intensive care unit, and then demolished.



Laurie Dahl had a series of psychotic episodes in his early 20s in a series of asylums around the UK. Remaining on anti-psychotics ever since, his recovery has seen him train as an RMN, rising to ward manager, and then embarking on an academic career at Kingston University, while his mental health has remained stable.



Susan Young is a BAFTA-nominated animator whose current PhD research — *Bearing Witness: Autoethnographic Animation and the Metabolism of Trauma* — explores lived experience of interpersonal and institutional abuse, and includes the films *It Started with a Murder* (2013), and *The Betrayal* (2015).



Kamaldeep Bhui
(Department of Psychiatry, University of Oxford)
and
Neil Armstrong
(Department of Psychiatry, University of Oxford)

‘Racial and Ethnic Inequalities in experiences and outcomes of severe mental illness’



Professor Kamaldeep Bhui is Professor of Psychiatry at the University of Oxford, Honorary Consultant Psychiatrist at East London Foundation Trust, and Honorary Professor and former Head of Centre for Psychiatry at Barts & the London School of Medicine and Dentistry, Queen Mary University of London. Among other roles, he is a founder and former Trustee of Careif, and currently a Trustee of Centre for Mental Health and ThinkAhead. His work and interests include social and cultural psychiatry and health inequalities, epidemiology, health services research and psychological therapies. Prof Bhui’s current research focuses on ethnic inequalities of experiences and outcomes of severe mental illness, adolescent mental health, and multimorbidity and ethnicity, public mental health and preventive medicine. E-health and digital health innovations are embedded in several research programmes.

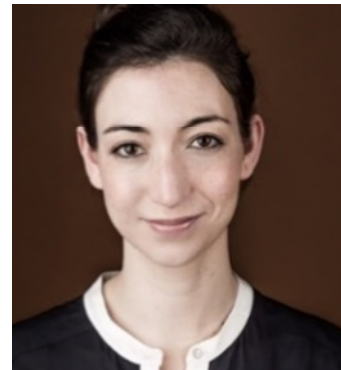


Neil Armstrong is stipendiary lecturer in social and cultural anthropology at Magdalen College, Oxford. His research investigates innovative ways of understanding mental healthcare, focussing in particular on the institutional setting and the viability of other ways of organising care.

Caroline Green
**(National Institute for Health Research Policy Research Unit in
Health and Social Care Workforce, King's College London)**
and
Palvi Dodhia
(Serene Care)

'The future of AI in caring for people with dementia'

Dr Caroline Green is an applied researcher at the National Institute for Health Research (NIHR) Health and Social Care Workforce Researcher Unit, King's College London. Caroline's research focuses on human rights of people with care and support needs and innovations in social care.



Palvi Dodhia is a care home provider who started her career at Goldman Sachs and worked in several other investment banks. Along with co-founder, Jay Dodhia (CEO), she has helped build Serene Care into an award-winning boutique care home group and is also a vocal advocate for social care as the co-chair of the social care innovators People Plan group, Ambassador for Championing Social Care, and Dementia UK.



Jonathan Pugh
(Uehiro Centre for Practical Ethics, University of Oxford)
and
Camillia Kong
(Nuffield Department of Population Health, University of Oxford)

'Autonomy, Capacity and Consent in Mental Healthcare'



Jonathan Pugh is the Parfit-Radcliffe Richards Senior Research Fellow and Manager of Visitors Programmes for the Oxford Uehiro Centre, University of Oxford. He recently led a Wellcome Trust funded project entitled "The Ethics of Novel Therapeutic Applications of Deep Brain Stimulation", and he is currently on secondment to the UK Pandemic Ethics Accelerator Project. He is the author of *Autonomy, Rationality, and Contemporary Bioethics* (OUP, 2020), and his research interests lie primarily in issues concerning personal autonomy in practical ethics, particularly topics pertaining to informed consent. He has also written on research ethics, public health ethics, criminal justice, human enhancement, and gene-editing.



Camillia Kong is Principal Investigator of the AHRC-funded project, *Judging Values and Participation in Mental Capacity Law* and Senior Research Fellow at the Institute for Crime and Justice Policy Research, Birkbeck College. She is a moral and political philosopher with research expertise on medico-legal conceptualisation of mental capacity, the ethics of psychiatry and psychiatric genomics, and the hermeneutics and phenomenology of mental disorder.

Mohammed Rashed
(Department of Philosophy, Birkbeck, University of London)
and
Kai Syng Tan
(Manchester School of Art, Manchester Metropolitan University)

*'From Conditions to Encounters:
The Problem of Understanding in Philosophy of Psychiatry'*

Mohammed Abouelleil Rashed is a researcher and lecturer in philosophy of psychiatry and a practicing community psychiatrist. He is the author of *Madness and the Demand for Recognition: A Philosophical Inquiry into Identity and Mental Health Activism* (Oxford University Press, 2019).



[Kai Syng Tan](#) PhD FRSA SFHEA is an award-winning artist-curator, academic, consultant and catalyst (National Coordinating Centre for Public Engagement Culture Change award 2018; San Francisco International Film Festival Golden Gate New Visions Award 1999). Hyperactive and tentacular, she is best known for generating novel connections and productive antagonisms with diverse and divergent body-minds and bodies of knowledge across disciplinary/geopolitical/ cultural boundaries. Kai has been featured on 900 platforms worldwide (including *How to Thrive in 2050*, now playing on BBC iPlayer), taught/consulted at 100 HEIs (such as University of Helsinki, Tama University and Australian National University), and delivered multiple keynote lectures, masterclasses and CPD globally (including to 870 mental health specialists from 17 countries at the 14th International Conference on ADHD in Berlin 2021).



Frank Röhricht
(Wolfson Institute of Population Health, Queen Mary University of London
and East London NHS Foundation Trust)
and
Lambros Malafouris
(School of Archaeology, University of Oxford)

'The embodied and enacted psychiatrist – a paradigm change to inform personalised clinical practice'



Frank Röhricht is a consultant psychiatrist, body psychotherapist, Honorary Professor of Clinical Psychiatry at the Wolfson Institute for Population Health, Queen Mary University London, and an Honorary Professor of Psychiatry at St. George's Medical School. He is also Medical Director for Research, Innovation and Medical Education at the East London NHS Foundation Trust, and Co-Director of the “Clinical Psychology with Body Psychotherapy Certificate” master’s programme at Maltepe University, Istanbul. He trained in medicine, body psychotherapy, psychiatry, neurology and psychosomatic medicine, in the Netherlands and Germany, between 1984 and 1997; since 1997 he has been working as a consultant psychiatrist for the NHS in London. His research focuses on body image phenomenology, the embodiment and evaluation of new psychotherapy interventions for severe mental illnesses (especially body psychotherapy), creativity and art therapies, transcultural psychopathology, and community psychiatry care models.



Lambros Malafouris is Professor of Cognitive and Anthropological Archaeology at the Institute of Archaeology and Fellow at Hertford College, University of Oxford. He is the author of *How Things Shape the Mind* (MIT press, 2013) and *An Anthropological Guide to the Art and Philosophy of Mirror Gazing* (Bloomsbury, 2020, with Maria Danae Koukouti). He has edited *The Cognitive Life of Things* (Cambridge 2010, with Colin Renfrew), *The Sapient Mind* (2009, Oxford University Press, with Colin Renfrew and Chris Frith), and **Material Agency** (2008, Springer, with Carl Knappett). Lambros Malafouris is currently PI of HANDMADE funded by the European Research Council (ERC).

Organising Committee



Director: *Anita Avramides, Senior Research Fellow in Philosophy, University of Oxford*

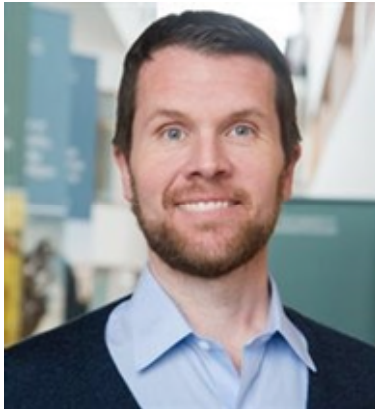
Anita Avramides is currently a Senior Research Fellow in Philosophy at St Hilda's College, Oxford. Previous to this she was the Southover Manor Trust Fellow in Philosophy at St Hilda's and Reader in Philosophy of Mind in the Oxford Philosophy Faculty. Her work is in the philosophy of mind and of language. In the last few years she has published mainly on the problem of other minds - how we know and how we relate to others.

Director: *Edward Harcourt, Professor of Philosophy, University of Oxford*

Edward Harcourt has been a member of the Oxford Philosophy Faculty and a Fellow of Keble College since 2005. His research is in ethics, in particular in moral psychology, and he has published on topics including neo-Aristotelianism and child development, the ethical dimensions of psychoanalysis and psychotherapy, the moral emotions, love and the virtues, Nietzsche's ethics, the philosophy of mental health and mental illness, literature and philosophy, and Wittgenstein.



From 2010-15 he convened the Meaning and Mindedness: Encounters between Philosophy and Psychoanalysis seminars at the Tavistock Clinic, London. He was Principal Investigator of the Wellcome/ISSF project 'Therapeutic Conflicts: Co-Producing Meaning in Mental Health' (2014-16) and of the AHRC network 'The Development of Character: Attachment Theory and the Moral Psychology of Vice and Virtue' (2016-17). Currently on secondment as Director of Research, Strategy and Innovation at the Arts and Humanities Research Council, his collection Attachment and Character: Attachment Theory, Ethics and the Developmental Psychology of Vice and Virtue appeared with OUP in 2021.



Director: *Matthew Parrott, Associate Professor in Philosophy, University of Oxford*

Matthew Parrott is a Fellow and Tutor in Philosophy at St Hilda's College, Oxford. Prior to this, he was a Birmingham Fellow at the University of Birmingham and a Lecturer in Philosophy at King's College London. His research focuses on questions in philosophy of mind, cognitive science, and philosophy of psychiatry. He has published on the nature of delusions, self-knowledge, and our knowledge of others' minds.

Senior Associate Director: *Doug McConnell, Research Fellow, Oxford Uehiro Centre for Practical Ethics*

Doug is a research fellow at the Oxford Uehiro Centre for Practical Ethics where he works on issues in moral psychology, bioethics, and applied philosophy, particularly in relation to psychiatry. One of his central research interests is to understand how self-narratives influence autonomy and he has drawn on first-hand accounts of addiction to illustrate the relationship between them. He also contributes to teaching the Philosophy of Psychiatry & Mental Health module in the Masters in Practical Ethics at the University of Oxford.



Provisional Timetable

Wednesday 13 July 2022

From 12:00	Accommodation check-in	Lodge
------------	------------------------	-------

Thursday 14 July 2022

08:00 – 09:00	Breakfast (residential guests only)	Dining Hall
08:00 – 09:00	Registration with Tea/Coffee	Rooftop Garden Suite (Hall)
09:00 – 09:15	Introduction	Rooftop Garden Suite (A/B)
09:15 – 10:45	Session 1	Rooftop Garden Suite (A/B)
10:45 – 11:00	Tea/Coffee	Rooftop Garden Suite (C)
11:00 – 12:30	Session 2	Rooftop Garden Suite (A/B)
12:30 – 13:30	Lunch	Dining Hall
13:30 – 15:00	Session 3	Rooftop Garden Suite (A/B)
15:00 – 15:15	Tea/Coffee	Rooftop Garden Suite (C)
15:15 – 17:30	ECR talks	Rooftop Garden Suite (A/B)
18:30	Evening meal (residential guests only)	Dining Hall

Friday 15 July 2022

08:00 – 09:00	Breakfast (residential guests only)	Dining Hall
09:00 – 10:30	Session 4	Rooftop Garden Suite (A/B)
10:30 – 10:45	Tea/Coffee	Rooftop Garden Suite (C)
10:45 – 12:15	Session 5	Rooftop Garden Suite (A/B)
12:15 – 13:15	Lunch	Dining Hall
13:15 – 14:45	Session 6	Rooftop Garden Suite (A/B)
14:45 – 15:00	Tea/Coffee	Rooftop Garden Suite (C)
15:00 – 17:00	Keynote talk	Rooftop Garden Suite (A/B)
18:30 – 19:00	Drinks reception	River Lawn
From 19:00	Gala dinner	Jacqueline Du Pré foyer

Saturday 16 July 2022

08:00 – 09:00	Breakfast (residential guests only)	Dining Hall
Until 10:00	Accommodation check-out	Lodge

About the Venue

St Hilda’s has one of the most beautiful settings in Oxford. The buildings and gardens stretch along the banks of the River Cherwell which flows under nearby Magdalen Bridge. From the lawns, you can enjoy one of the best views of Oxford’s dreaming spires. The college is just off Oxford’s busy High Street, and is also two minutes from East Oxford, famed for its vibrant mix of independent shops, world cuisine restaurants, cafés and bars.

Founded by Dorothea Beale in 1893, St Hilda’s was the last of the women’s colleges to be established in Oxford. The College has remained true to its pioneering roots and continues to strive for equality as well as excellence. St Hilda’s reached its 125th anniversary in 2018, and the same year marked its 10th anniversary as a ‘mixed’ college that welcomes all students. In 2021 the Anniversary Building and Pavilion were opened as part of a major redevelopment of the college’s accommodation and facilities, which have enhanced significantly the experience of St Hilda’s as a place to live and work.



Anniversary Building and Pavilion, St Hilda’s



Rooftop Garden Suite, St Hilda’s

The Summer School will be held in The Rooftop Garden Suite, which is part of the new Anniversary Building. Surrounded by windows, the Suite is light, spacious and well-ventilated. It also offers fantastic views of the gardens and the meadows, looking towards the city skyline.



Evening view from The Rooftop Garden Suite